

# ABC GUIDE

HOW TO CONNECT  
TO YOUR EXISTING  
SATELLITE DISH

## How To Install OpenView HD Using Your Existing Satellite Dish

Using your new OpenView HD decoder with your existing satellite dish couldn't be easier. This decoder is compatible with existing DStv, Freevision, StarSat/Top TV and Vivid satellite dishes. So if your dish is already installed, and in good working order, you can follow easy DIY steps to install and activate your OpenView HD decoder.

### BEFORE YOU BEGIN - TAKE NOTE:

- If you are using a satellite dish that was connected to a StarSat/Top TV decoder, please follow the installation instructions in the User Manual, which is in the box.

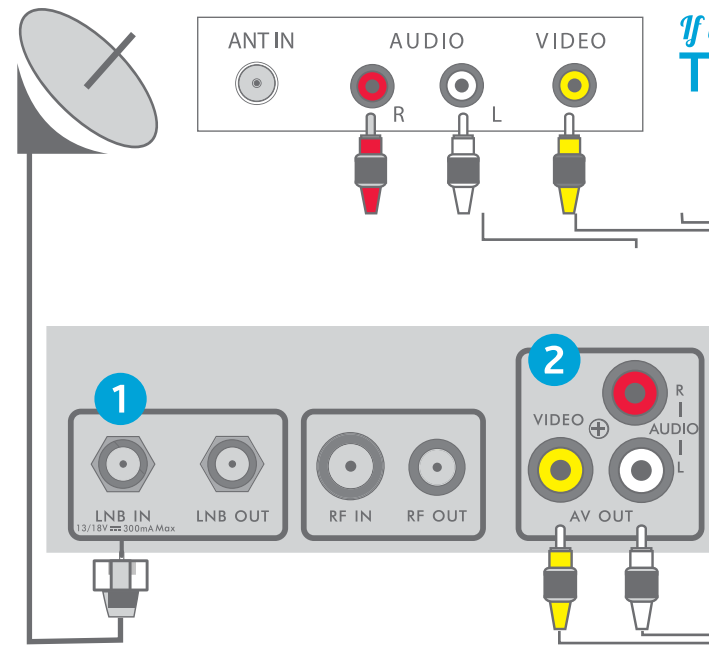
- If you are using a satellite dish that was connected to a DStv, Freevision or Vivid decoder you need to follow these steps to complete the installation.

# A

CONNECT DECODER  
TO YOUR SATELLITE  
DISH

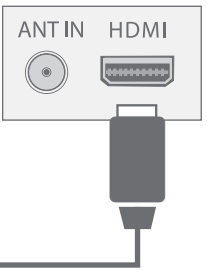
## STEP 1

Connect the satellite dish cable to the LNB IN socket at the back of your OpenView HD decoder.



## If you have a TV THAT'S NOT HD STEP 2

Connect an RCA cable to the AUDIO L/R & VIDEO sockets (match to red, white and yellow), at the back of your decoder and on your TV.  
**SELECT THE CORRECT AV SOURCE ON YOUR TV.**



## If you have an HD TV STEP 3

If you have an HD ready flat screen TV, for the best picture quality, connect an HDMI cable to the HDMI inputs on the decoder and your TV. HDMI cable not included.  
**SELECT THE CORRECT HDMI SOURCE ON YOUR TV.**

## STEP 4

Plug in your Power Cable.

Now you're ready for **B**

# B

UPDATE DECODER'S  
SOFTWARE

*Please read through these instructions carefully before you start.*

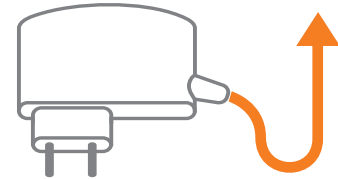
## STEP 1

Make sure that there are batteries in the remote and that the remote is working.



## STEP 2

Unplug the decoder's Power Cable.



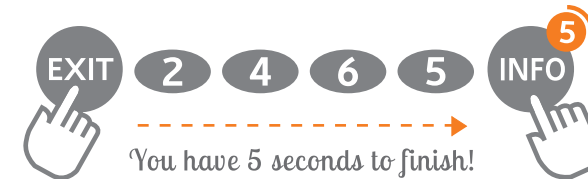
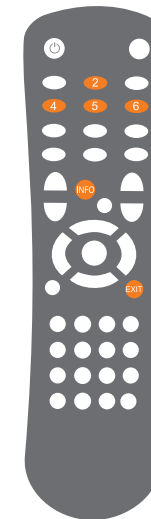
## STEP 3

*First read this step from start to finish & have your remote ready*

PLEASE NOTE YOU WILL ONLY HAVE 5 SECONDS TO ENTER THE CODE.

Plug the decoder's Power Cable in again, and wait for the loading screen to appear.

**IMMEDIATELY** after it appears, press the "EXIT" button on your remote control, followed by 2-4-6-5 and the "INFO" button.



If you don't see THE **ADVANCED SET-UP SCREEN** YOU'LL NEED TO REPEAT **STEPS 2 & 3**

## STEP 4

Your TV should now have the "Advanced Set-Up" menu on the screen.

Use the **OK** button to swop between **column A and B**, and confirm selection.

Use the **▲▼** buttons and number pad to enter the information below:

Column A	Column B
<b>Advanced Set-Up</b>	
Modulation System	DVB-S2
Frequency	11.17000 GHZ
Symbol Rate	28.7500 MS/s
FEC	5/6
Modulation	8PSK
Rolloff	25%
Polarization	Vertical
LNB LO1	09.750 GHZ
LNB LO2	10.600 GHZ
Polarization mode	Voltage
Sat Switch	None
<b>OK</b>	

**\*** Double check that all the information is correct.

IF IT'S ALL CORRECT

**OK** Select "OK" on your screen then press the **OK** button on your remote.



A Downloading Software progress bar will be displayed, this process may take a few minutes.



**NB:** Please do not switch off the decoder until the download has completed.

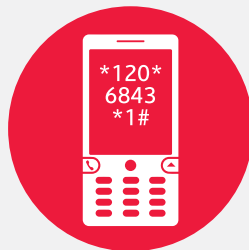
## STEP 5

Once the decoder has completed scanning it will display OpenView HD's channel 100, which will show you how to activate your decoder.

Now you're ready for **C**

# C

ACTIVATE  
YOUR DECODER



To activate your decoder dial \*120\*6843\*1# on your mobile phone and follow the prompts.

If your activation is unsuccessful after several attempts, call the helpline number on your box.

